

The HeartBeat

Wesley Memorial United Methodist Church
High Point, North Carolina

Volume 21 No. 2

February 2013

Backpack Program



Fill the Backpacks!

Fairview Partnership Expands
with New Supplemental
Backpack Initiative

For over a decade, Wesley Memorial's partnership with Fairview Elementary School has been an important part of our ministry in the High Point community. Growing out of the same Spirit-led process that started our work in the Macedonia community, the Fairview Partnership involves many of our members through reading programs, test proctoring, and other volunteer opportunities. We also provide support through special drives including our 2012 Lenten Book project that resulted in over 1500 books being collected for students. God has used the children of Fairview to mold and shape us as disciples of Jesus Christ.

Guided by our Strategic Plan, and growing out of the work of the August Mission Summit, a small group has been developing plans for a new initiative focused on children experiencing hunger in our community. The need is clear: in Guilford County, 19.2% of residents do not know where their next meal is coming from and 1/3 of these persons are children. Many children go unfed from lunch on Friday until breakfast on Monday because their families do not have adequate access to food.

KALAS TO PREACH

The noted United Methodist preacher and scholar, J. ELLSWORTH KALAS, will teach and preach at Wesley Memorial on February 24, 2013.

see back cover for details

A backpack program supported by the United Way and Second Harvest Food Bank helps care for approximately 50-60 children on normal weekends. But on longer weekends, teacher workdays, school holidays, as well as Christmas and Easter breaks, the children need extra food to make it through.

With the approval of Church Council on January 15, Wesley Memorial began a three year commitment to Fairview Elementary School to provide supplemental backpacks for approximately 24 days each year. Many groups including Wesley Memorial School, our Children's Ministry, Youth Ministry, and adult small groups have already agreed to help us Fill the Backpacks! We hope you will, too!

February 3, 2013 is
our Fill the Backpack
kick-off Sunday.
Please help us by
bringing the following
items:



Fruit cups and raisins, breakfast bars and individual cereals, milk and juice boxes, packs of cheese and crackers or peanut butter and crackers, meat and protein items.

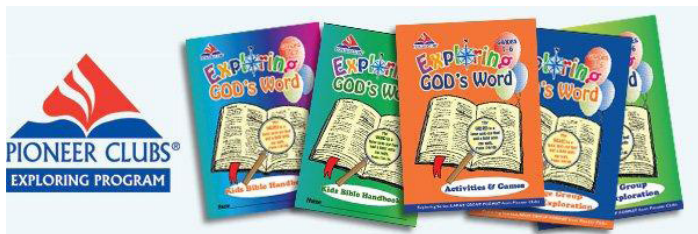
New Children's Gathering Space Celebration & Dedication Sunday, February 3 at 9:45 am



Children & Family Ministry ~ pg 2 Youth News ~ pg 3 - 4 Adults ~ pg 5 WMS ~ pg 6
Music ~ pg 7 Budget ~ pg 8 Missions ~ pg 9 Wednesday Dinners ~ pg 10 Memorials ~ pg 11

Are you getting the "Family Connection" E-News?

This is an email newsletter going out at least monthly to families in our Children's Ministry here at Wesley Memorial. Please contact Melissa Coley (mcoley@wesleymemorial.org) with your child's name, your email address and your child's current Sunday School class or age if you want to get "connected" with the "Family Connection".



Bible Explorers

Stirring Up Something New for Kindergarten – 5th Graders.

Beginning Sunday, February 10

from 4:45-6:00 pm

This weekly Christ-centered club program helps children grow as whole persons and learn to make Christ Lord in every aspect of life. Games, singing, and skill-building activities or projects such as drama, fitness, camping, cooking, and woodworking are all part of the fun. In weekly Bible explorations, children learn about God's love, Christian values, and how to apply the Bible to everyday life.



Two age level groups: **Voyagers** K-2nd Grade
Pathfinders 3rd-5th Grade

Children will complete activities to earn Bible and Activity awards. *All this will surely be a recipe for fun!*

Register your child TODAY to begin February 10 by contacting Debbie Foust dfoust@wesleymemorial.org 812-4804. Cost is \$10/year for a student book.

4th & 5th Grade Lock-In

Friday, March 8 from 5 pm until 9 am Saturday, March 9. Here at the Church. Mark the date and watch the "Family Connection" for more details.

"Big Kids" Easter Egg Scavenger Hunt & Pizza Dinner

For grades 3rd – 5th

Friday, March 22; 6-7:30 pm

Bring a flashlight, a basket, a friend and plan to hunt for eggs in the dark Sanctuary!!

Reservations due by Monday, March 18.

Contact Melissa Coley, 812-4806 or mcoley@wesleymemorial.org. Cost is \$5.00 for pizza.



Younger Kids Easter Egg Hunt

For Toddlers - 2nd Graders

Sunday, March 24; 4 pm

We will begin in the Dining Hall with activities before going out to hunt for eggs in different age level areas. Please bring 12 plastic eggs containing individually wrapped candies, stickers or other "prizes". No reservations needed.

Save the Date-VBS

Monday, July 15 – Thursday, July 18; 9-12:30 pm.

Ages 3 year olds – 5th Grade (child care available for those while they are volunteering)

Human Sexuality Event

Created by God for rising 5th & 6th graders

Thursday, April 11 – Saturday, April 13

Thursday, 7:30 pm (parent meeting)

Friday, 4-8:30 pm & Saturday, 9-12:30 pm (student sessions)

Saturday, 12:30-3:30 pm (student and parent session)

Cost will be \$50.00 per child. A letter with complete details and registration information will be sent to all rising 5th and 6th grade families. For more information please contact Debbie Foust; dfoust@wesleymemorial.org or Melissa Coley; mcoley@wesleymemorial.org.



Contact: **Debbie Foust**

Director of Children & Family Ministry

812-4804

dfoust@wesleymemorial.org

Confirm'13 The Confirmation class retreat at Lake Junaluska is scheduled for **March 22-24**.

The retreat is an additional setting for the confirmands to spiritually form and develop an understanding of the commitment they are making to their own Christian discipleship. During the retreat workshops on living the committed life of a Christian disciple through their prayers, presence, gifts, service, and witness will be offered. This retreat is open to all students who are currently enrolled in the confirmation class. The retreat is \$120 and the registration is found online at the youth website.



Middle School Retreat - **Kaleidoscope** - **April 12-14**

Kaleidoscope is a special weekend that gives middle school students an opportunity to deepen their relationship with God in a fun, relaxing atmosphere. Kaleidoscope is led by the Conference Council on Youth Ministry and brings together students from many churches to worship and learn about God. The retreat is \$120 and the registration is found online at the youth website.

High School Beach Trip – April 19-21

All High School Students are encouraged to join us on our first annual beach trip. We will leave on Friday night, spend a day at the beach and finish Sunday with a cook-out. On Sunday we will join Faith Harbor UMC, Surf City for worship. Due to the generous support of church members the student ministries will be spending the weekend in Topsail. The beach trip is \$75 and includes all meals, accommodations and travel. Registration is found online at the youth website.

Church Camp 2013 - June 9-15

Planning for Summer Camp 2012 at Camp Linn Haven is already underway!!! A secret theme and exciting lessons are being prepared and you don't want to miss out on this wonderful Wesley Memorial experience.

This year we are so excited to be opening the camp up to 6th thru 10th grade students. We believe that greater opportunities to attend camp will only strengthen each student's faith and friendships. 11th



and 12th grade students are encouraged to apply to serve as Student Counselors. College and adult volunteers are always needed.

- Church Camp Cost: Campers - \$375
- Student Counselors - \$275

Registration is open and can be found online at the youth website.

If you are able please consider making a donation in support of Church Camp. Your gifts allow us to be at our best each and every year!

High School Mission Trip to New York – June

Wesley Memorial Student Ministries will be partnering with The Center for Student Missions to help in New York City. One of the possible missions could be serving with the Salt & Sea Mission. This ministry is in the Coney Island neighborhood. For the community, Salt & Sea provides a worship service, food pantry, and a hot meal program. CSM teams will lead their worship service, assist with the food pantry, and serve the hot meal.

This mission opportunity is \$450 and includes accommodations, travel and meals. This cost does not include: food during travel and spending money. Registration is found online at the youth website.



Middle School Mission Trip – August 3 - 5

For the first time, Wesley Memorial Student Ministries we will offer a middle school mission trip in the Charlotte area. This weekend is perfect for all middle school youth to get a great taste of true mission work in a safe environment.

This mission opportunity is \$100 and includes accommodations, travel and meals. This cost does not include: food during travel and spending money. Registration is found online at the youth website.



More Youth News on page 4



Contact: **Adam Vernon**
Director for Student Ministries
812-4812
avernon@wesley memorial.org
www.wmyouth.org



Breaking News: Student Kenya Mission Trip

2014 Wesley Memorial Student Ministries is very excited to announce an opportunity to experience God's work in a new and wonderful way.

Our tentative plan is to schedule a 10 day trip to Nakuru to partner with an already established mission organization. Our time will include: serving in a local school, minor construction work, and a safari tour. The estimated cost is \$3200 per person (This does not include: Passport, Visa, spending money, & food costs while traveling). Please keep in mind that the reason we have announced this trip so early is in order to plan fundraisers to help with the costs.

There will be an information meeting on February 5 at 6:30 pm in the youth area. Please plan to attend this gathering and continue to pray about this opportunity.



For many of us we can point to an important group of friends who have deeply encouraged our faith formation. For many of us that group is currently meeting as a small group. In these gatherings the Bible is studied, friendships are strengthened, and accountability is extended. These groups and the time together often becomes a vital part of our faith formation.

Student Ministries believe that forming small groups for students is an important endeavor to support spiritual growth and accountability. In the New Year we will establish age and gender specific groups for both middle and high school students.

Our hope is to have these new groups meet in the homes of supportive parents. If you are interested in hosting a group please contact Adam Vernon at avernon@wesley memorial.org.

Youth Lenten Small Group

7:00 pm to 8:30 pm

Student Ministries will be offering a 6-week small group experience during the season of Lent. We will be using a recent study written by Adam Hamilton titled, *The Way: Walking in the Footsteps of Jesus*. This small group will be open to all students and everyone is encouraged to be apart of this time.

Week 1: February 20 - Baptism and Temptation

Week 2: February 27 - The Healing Ministry

Week 3: March 6 - Proclaiming the Kingdom

Week 4: March 13 - Calming the Storm

Week 5: March 20 - Sinners, Outcast, and the Poor

Week 6: March 27 - The Final Week

All You Can Eat Pancake Supper



**SHROVE
TUESDAY**

**Tuesday,
February 12
5:30-7:30 pm**
in the
Dining Hall

Tickets are \$5
Children under 12 are free

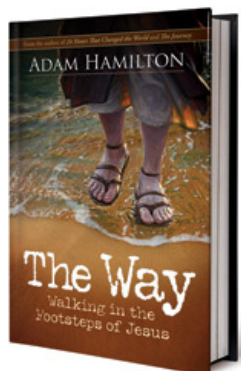
Sponsored by the United Methodist Men (Wesley 100) in conjunction with and in support of Wesley Memorial Ministries.

Lenten Study Class for Adults

"I hope that this journey [through this study], walking in the footsteps of Jesus, will deepen your understanding of Jesus' life, while at the same time deepening your faith in him and your love for him."

-Adam Hamilton

This Lent, we will be studying Adam Hamilton's *The Way: Walking in the Footsteps of Jesus*. This study will be offered on Wednesday nights at 6:45 pm in the Media Center beginning February 20. In this study, we will be exploring the life and ministry of Jesus Christ through video, Bible study, and discussion. Come and deepen your faith this Lent.



This study will also be shaping our preaching and worship throughout this Lenten season. Prepare to fall in love with Jesus all over again!

Reminder to Sunday school classes: On February 24, J. Ellsworth Kalas will be with us teaching during our Sunday School hour. This wonderful event will be held in the Chapel. Everyone is invited!

Day Retreat Saturday, March 9; 9 am-12 pm Facing the Cross

During this retreat, away from the busyness of home and work, you will be invited to take prayer walks searching for crosses and items in nature that will help you to make your own cross to use during this Lenten season. It will be an inspiring time of reflection and creativity. Come and face the cross this Lent during our Day Retreat!

The cost for the event will be \$5 to cover the cost of materials. We will meet in the Media Center and our retreat leader will be Miriam Ward. To register, please call/email Melissa Coley at 812-4806 or mcoley@wesleymemorial.org. See you there!



Live Alive

Tuesday, February 19

Program: Roy Shipman speaking about High Point

Menu for February 19: Country Style Steak, White Rice, Cabbage, Corn, Bread & Dessert

Live Alive meets every 3rd Tuesday of the month:

10 am - Register for Best Time Trips, Play Bingo and get your Blood Pressure checked in the Fellowship Hall Foyer;
10:30 am - Book club in the Small Dining Room and Corn Hole in the Youth Area;
11:45 am - Lunch in the Dining Hall with the program following.

We ask that reservations be made by 10 am on February 15 by calling the Front Desk at 884-2204.

New Opportunities Abound!

Our Live Alive gathering in February will be offering some new opportunities. On February 19, we will be offering a book club, meeting in the small dining room, led by Jane Blackwell. We will also be offering corn hole in the youth gathering space. Both of these new opportunities will begin at 10:30 am. Bingo will still be offered at 10 am with lunch following all these events at 11:45 am. Come for a fun and inspiring time as we grow together. Anyone 55 and older are invited to come!



Contact: **Rev. Kathy Barba Pierce**
Associate Pastor for Adult Education
and Spiritual Formation
812-4815
kathybp@wesleymemorial.org

wesley memorial school

NURSERY • PRESCHOOL • KINDERGARTEN • AFTERSCHOOL

Time To Register Your Child For 2012-13 School Year Is Here!

Nursery Day:	Classes for Infants, Toddlers, Twos 9 am-12 noon; 1, 2, 3, 4, or 5 days/week
Preschool:	Classes for Children age 3 by Aug 31 9 am-12 noon, with "Lunch Bunch" on Weds or Thurs (T-Th groups) until 1pm 2, 3 or 5 days/week Classes for Children age 4 by Aug 31 9 am-12 noon; "Lunch Bunch" on Weds 3 or 5 days/week
Kindergarten:	Classes for Children age 5 by Aug 31 9 am-1 pm daily with lunch at school; 5 days/week only

Extend-The-Day Childcare Available! Parents may add 1 hr.

Choice of: Before-School Care, 8-9 am
or
After-School Care, 12-1 pm

The Way Station Afterschool Program for school-aged children
in Kindergarten through 5th grade; 2-6 pm

Take advantage of "Early Bird" priority registration
period for members and current students. Accept-
ing families on our Waiting List beginning mid Feb-
ruary. We're filling up FAST for the 2013-14 school
year!

Call 884-4232 to talk with Susan Sumpter or Susan
Kelley. We'll be delighted to answer questions, give
you a tour, and help design a "custom plan" to meet
your school and childcare needs!

***Visit our website for photos and highlights of our activities year-
round:***

www.wesleymemorialschool.org

Come visit our WM School booth at the
Guilford County Preschool & Kindergarten Parent Fair!
High Point Museum
Monday, February 18; 11 am-1 pm and 5-7pm
Handouts and resources will be available to help
families ready their child for a successful start.

OPEN HOUSES!

Parents & grandparents are invited to join us for day-
time OPEN HOUSE sessions about our fall classes! We
WANT you to explore the "Wesley difference" in high-
quality early childhood education! During our OPEN
HOUSES, we will share age-level learning activities &
curriculum, give walk-thru tour of classrooms, & time
to meet teachers.

Come to an OPEN HOUSE for...

Kindergarten Fives	Wednesday, January 30, 9:30 am
Pre-K Fours	Friday, February 1, 9:30 am
Threes	Wednesday, February 6, 9:30 am
Infants, Toddlers, Twos	Friday, February 8, 9:30 am

Upcoming Dates for WM School:

Monday, February 18 – Preschool & Kgt Parent Fair!
High Point Museum, 11 am-1 pm & 5-7 pm

Friday, February 22 – Teacher's Workday/ Parent-
Teacher Conferences

"IT'S FAMILY NIGHT" AT WESLEY MEMORIAL SCHOOL!

Thursday, March 7, 6:30-8 pm

6:30-7:15 pm:

Children are the "teachers" for the evening and will
engage the grown-ups in Nursery, Preschool & Kgt
work. Moms, Dads, Grands and visitors will be the
"students." Everyone gets to paint a picture! Create
a graph! Engineer a block structure! Write an origi-
nal short story! (The boys and girls will show you
how.) It's a wonderful opportunity to get-acquaint-
ed with our WM School programs, see classrooms
and meet our staff.

7:15-8:00 pm:

It's off to the Dining Hall to make ice cream sundaes
and hear our Kindergarten Fives sing. Of course,
expect audience participation!



Contact: **Susan Sumpter**
Director of Wesley Memorial School
884-4232
ssumpter@wesleymemorial.org

News from...



...The Way Station After School Program

Attention Working Parents of School-Age Children Kgt-5th Grade! Are you looking for all-day care for your child this summer? (3 or 5 days/week) Are you looking for afterschool care for your child this fall? Are you looking for care when child's school is closed for holidays/workdays/snow days?

The Way Station is just the Christian "home away from home" to meet your child's needs!

We invite you to visit The Way Station! Schedule tours with Susan Sumpter, 884-4232 or Michele Kinley, 884-8067. Call for an information packet describing fees, daily schedule, and activity times such as crafts, homework help, recreation and fieldtrips.

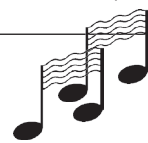
This vital Afterschool Ministry of Wesley Memorial has been in operation since 1996. The Way Station serves from 35-42 children of elementary school-age. Children just completing Fours, and who will be age 5 by August 31 are eligible for "Fun In The Son" summer program.

The Way Station facility is located downstairs, adjacent to our Fellowship Hall. Summer operational hours are 7:30 am-6:00 pm. During the school year, hours are 2:00-6:00 pm – with full days available on school holidays, teacher workdays and most snow days. Outstanding staff has completed NC Certification in Basic School Age Care (BSAC): Michele Kinley, Merri Mabe, Wendy Steiss, Christopher Hill.

Registration for Summer and Fall is now open at The Way Station!

"I love, love, love The Way Station. It has been a gift to me as a parent. The staff is kind, caring and have really gotten to know my children which makes a huge difference. They always make an effort to tell me about my children's day. The staff takes the time to really talk to my children, which helps me immensely when trying to determine their moods/behavior."

-- Tracie Blackmon (mom of Briley, Parker & Cooper)



You are invited to join us **Saturday, February 2 at 10:30 am in the Chapel** as we welcome the string studios of Rebekah Carlson and Brian Carter and the Student Talent Education Program for Strings (STEPS) program of Wesley Memorial. This is the first ever **recital of the STEPS program**, and we would love to have you in attendance.



Contact: **Dr. Michael Dougherty**
Director of Music and the Arts
812-4816
mdougherty@wesleymemorial.org



Volunteer for the Contemporary Worship Services

We are in need of your help! Do you want to make your experience of worship in the contemporary space more meaningful and impactful? Become a part of the service by volunteering your time and energy in any of the following areas:

- Singing in the Praise Team
- Running the stage desk (working with the computer and putting together screens for worship)
- Ushers for the services
- Communion Servers for the services (usually the first Sunday of the month)
- Decorating & Setting up the Worship Space

If you feel led to offer yourself in any of these areas, please contact Kathy Barba Pierce at kathybp@wesleymemorial.org or 812-4815. Come and make your experience of worship and the worship of others more meaningful!

2012 Budget Finishes in the BLACK!

Thanks to your generous support and careful budget management by staff and volunteers throughout the year, we finished 2012 with a Fund Balance of approximately \$250,000! This means that having met all our obligations for 2012, we received approximately \$250,000 more than we needed! This is terrific news. Our pledge shrinkage, the amount of pledges that went unpaid was approximately \$50,000 – one of the lowest amounts in many years. We also received \$237,000 in gifts from members and friends who had not pledged for 2012. This was \$138,000 more than we'd anticipated. Thank YOU for your generous support of Wesley Memorial's ministries on our campus, in High Point and beyond.

Church Council Tithes Fund Balance to Missions and Restores Cash Reserve

At the January Church Council meeting two important decisions were made regarding the \$250,000 Fund Balance.

- 10% of the Fund Balance, approximately \$25,000, has been set aside to support the new local mission initiatives being developed in response to the Strategic Plan. This tithe of our Fund Balance ensures that this money will be used to do ministry now in ways that are consistent with our Strategic Plan.
- The remainder of the Fund Balance, approximately \$225,000, will be placed in the Cash Reserve established with the 2011 Fund Balance. This means that we will have a Cash Reserve of approximately \$275,000.

What is a Cash Reserve?

A Cash Reserve, or Operating Reserve, is cash that is kept in reserve to smooth out cash flow from month to month. For example, it is not unusual for our expenses to outpace our income in the early summer each year. This situation often lasts into the late fall. Rather than utilize a line of credit to ensure we have enough cash, we would utilize our cash (operating) reserve.

How much do you need in a Cash Reserve?

Recommendations vary, but as an example,

the United Way recommends organizations maintain a cash (operating) reserve of approximately 4 months. This is meant not only to even out cash flow but to be available in the case of an extraordinary emergency. In our case, this would mean having approximately \$625,000 on hand. However, a cash reserve of \$250,000-\$300,000 would allow us to operate for 4-8 weeks in an emergency while the Trustees and Church Council took action to approve utilization of the Wesley Fund. [The Wesley Fund was set up so that principal can be accessed. This is not the case with Endowed Funds such as the Wesley Memorial Facilities Endowed Fund (formerly known as Welborn Fund.)]

Do we really need a Cash Reserve?

Yes. We have worked hard to ensure that Wesley Memorial's financial health is good. This has meant balanced budgets, increased transparency, inviting more folks into the budget process, and creating a budget that aligns with the Strategic Plan. Another aspect of a good financial health is having an adequate cash reserve.

If there is an emergency, how can the funds be accessed?

The Finance Committee is currently working on a procedure for accessing the Cash Reserve in the case of an emergency. This procedure will be approved by Church Council when completed.

The deadline for article submission for the March HeartBeat will be February 14. To submit information for the HeartBeat contact: Russ Pierce at rpierce@wesleymemorial.org or 812-4800.



Contact: Rev. Russ Pierce
Executive Pastor
812-4800
rpierce@wesleymemorial.org

United Methodist Women

UMW Board will meet Monday, February 4, 10:30 am in the Small Dining Room

Tuesday, February 12 - **Call to Prayer and Self Denial**, 11:00 am in the Fellowship Hall at First United Methodist Church, 512 N. Main Street, High Point. There will be a short program on Christian Financial Responsibility, a simple meal and fellowship. The offering will support programs that train women, children and youth in financial skills. RSVP by February 8 to Marilyn Groome, 884-8206.

Sunday, February 17 is UMW Sunday.

Saturday, March 9 - **District Mission Study** at Oak Ridge UMC, 9 am - 2 pm. Speaker is Pamela Moyer on "Poverty". There will be a light breakfast and bag lunch, no charge for this program. We will carpool from Wesley Memorial.

Circle Meetings for February:

The Angel Tree Circle will not meet

The Friendship Circle will not meet

Circle #6 - Monday, February 18, 7 pm, location TBA

Circle #8 - Monday, February 11, 11:00 am in the Small Dining Room at Wesley Memorial, service projects at the church

Circle #9 - Tuesday, February 19, 10:30 am in the Dining Hall

Circle #11 - Monday, February 18, 11:30 am in the Small Dining Room

Missions...

The Women of West End (WOW), initiated by the former Macedonia Moms unity group, is continuing to be well received. Although the women attending are not consistent due to their changing sets of circumstances, we always have a full house. The once a month meetings include a program, refreshments, and fellowship. The highlight is usually the "warm-up", words of wisdom, inspiration, and, of course, humor from our own Bee Rule!

Our program in November was the stuffing of the comfort pillows provided by Wesley Memorial. This gave our women a warm feeling of giving back to others in need of comforting and love. Little did they know that they would each receive a pillow at the December meeting as our gift to them. We also celebrated Christmas by baking and decorating cookies. These women created masterpieces with a ball of dough!

Many thanks to those of you who gave Gifts That Transform the World with donations to WOW. You are helping to provide an oasis each month for the women residing in West End neighborhoods, including Leslie's House, to join together for a time of support and diversion from the difficult circumstances of their lives. Also a big thank you to Dana Bentley

at the center for her supportive efforts in publicizing and promoting our events.

May your new year and theirs be blessed with hope, love, and peace!

Jane Kester, Bee Rule, Carolyn Steed, Carol Hutchins, Susan Weis, Sharon Page

Sandwich Ministry Draws to a Close

We were sad to learn in late December that the Sunday Sandwich Ministry that has been an important part of our ministry to those experiencing homelessness in High Point for over a decade was ending. Unfortunately, acts of violence had occurred at distributions in recent months and concern for the safety of clients forced a shut down. We are grateful to all those who have so faithfully served in this ministry over the years. YOU have made a difference.

At the January Church Council meeting a recommendation was made and later approved to transfer the remaining funds in the Sandwich Ministry account to the New Mission Initiatives Account. These funds, over \$4,000 will support our newly developing ministries to those experiencing hunger and homelessness in High Point.

Wesley Memorial Celebrates...

Generosity Shines Bright at Christmas

Wesley Memorial's members and friends—YOU—made a transformative difference in many lives during the Advent and Christmas seasons. Wesley Memorial offered myriad giving opportunities during the holiday season and you came through in extraordinary ways:

- 99 children at Henderson Settlement each received two presents from the Angel Tree.
- Another 60 children received two presents from the Angel Tree during the Jail Ministry Christmas Party hosted by our Wesley Memorial youth.
- Our alternatives gifts catalog, Gifts That Transform Our World raised over \$15,000 this year including gifts to ministries at Wesley Memorial, in High Point and beyond.
- Our Christmas Offering, a gift to UMCOR to provide ministries to those impacted by Hurricane Sandy, raised over \$11,000!
- We received dozens of gifts for the White Christmas service that went to our friends at Open Door. Thank YOU for your generosity and thank you to those who provided time and leadership to make this all happen.

Best Time Trips:

Make plans to join us!



Depart: Thursday, February 28; 8 am

Return: Friday, March 1; 4:30 pm

Place: Barter Theatre, Abingdon, VA

Cost: \$156 includes transportation, lodging, breakfast, entrance fee and dinner.

Day 1 Have lunch and see *I'll Never Be Hungry Again*, comedy based on *Gone With The Wind*. Enjoy buffet style dinner at Greenway Haven Party House and check into hotel. **Day 2** Continental breakfast, then return to High Point.

Contact Dwight Story at 475-6280 to register.

Special Delivery...

Neal and Betsey Clinard welcomed Lawrence "Hector" MacLean Clinard into their family on December 18, 2012. Neal and Rudduck have a new brother!

Adam and Chasity Bowles welcomed Jack Wyatt Bowles into their family on Sunday, January 13.

We would like to begin to announce all new babies born into our church family as well as weddings in the Heart-Beat each month. Please notify Debbie Foust, Director of Children & Family Ministry with any new arrivals or adoptions and Dr. Al Ward with wedding information to be included.

Wednesday Dinners...

Wednesday Night Dinners

Wednesdays are a perfect time for our church family to come together to dine, have fellowship, connect and grow. Dinner is served from 5:45 until 6:30 pm in the Dining Hall. The cost is only \$6.00 for adults, \$3.00 for those 14-18 years of age and free for those under 14.

Come by the Front Desk to purchase a ticket during the week or call the Church Office at 884-2204 to make a reservation. Mark your calendar today.

February 6-Pork Tenderloin Cutlets, Corn Bread Stuffing, Mixed Vegetables, Bread and Dessert
Children's menu is Hot Dog, Chips, and Carrots.

February 13-No Dinner due to Ash Wednesday. Make plans to attend Shrove Tuesday Pancake Dinner prepared by Wesley 100.

February 20-Chicken Salad Plate, Bread and Dessert. *Children's menu is Chicken Nuggets, French Fries, and Applesauce.*

February 27-Shrimp & Grits w/Baby Spinach, Bread and Dessert. *Children's menu is Pizza, Salad and Dessert.*

We Remember and Honor Our Loved Ones

Gifts given through December 2012

IN MEMORY OF:

Marcus Lafayette Aderholdt: Robert Allred
Patricia Stansbury Anderson: Bill Anderson, Tammy Wright
Karen Odell Austin (Sister of Harriet Mattes): Louise Zimmerman
James Alexander Bass, Jr. (Brother of Bob Bass): Dr. & Mrs. William Farabow
Henrietta H. Bellamy (Sister of Phyllis Morgan): Louise Zimmerman
William Martin Blackmon: John & Louise Campbell, Betty Ann & Nat Harrison, Lillian Kimrey, Joe & Judy Needham, John Peeler, Dwight & Sally Story, Keith & Cynthia Tobin, Sarah Woollen
Veta Gwyn Graham Blewster (Sister of Lou Dean Howard): Louise Zimmerman
Ruth Briles: Ruth Craven
Harold Craven: Ruth Craven
Joan Marie Coombs (Mother of Joal Coombs Morgan): Jo & Creed Smith
Sarah Tomlinson Foscue: Bonnie Cashion, David Hayworth, Clarence & Judy Hustrulid, Gayle & Amo Kearns, Mary Jane Lindsay, David Rawley, Liz & Raymond Rogers, William Whitaker
Hilda Burton Fountain: Rear Admiral & Mrs. Robert Fountain, Jr.
Dr. and Mrs. N.M. Harrison: Mr. & Mrs. N.M. Harrison, Jr.
Gina Marie Tonge Jacobs: Douglas & Susan Henderson, Claryce Norman
Mr. and Mrs. J.A. Johnson: Mr. & Mrs. N.M. Harrison, Jr.
Bob Safrit: Bonnie Cashion
Martha Nell Tucker: Dr. Elizabeth Harrison
Bob & Modine Vaughn: Robert & Betty Vaughn
Paul and Elsie Younts: Bob & Carolyn Younts

IN HONOR OF:

Dr. & Mrs. Ed Auman: Bonnie Cashion
Mrs. Thayer Coggin: Bonnie Cashion
Mary Clark Cole: Bonnie Cashion
Edward H. Covington: Samuel Hood
Dr. Michael Dougherty: John Peeler
Mrs. Bob Griffith: Bonnie Cashion
Carolyn Hall: John Peeler
Steve Hall: John Peeler
Elizabeth Harrison: Mrs. Royster Tucker, Jr.

Elna Hodges: Kim Black
Rev. Richard Howle: Wednesday Communion Group
Mr. & Mrs. Fred Isenhower: Bonnie Cashion
Mrs. Mary Jane Lindsay: Jane Lindsay Barrineau
Wanna McAnally (on the occasion of her 100th birthday): Bonnie Cashion, Barbara & Paul Coughlin, Elizabeth & George Ferguson, Mr. & Mrs. Ted Johnson, Bill & Libby Latham, Mary Jane Lindsay, Delle Martin, Dottie O'Connor, Frances Robinson, John & Patricia Seymour, Sarah Woollen
Katherine & Henry McMullan: Mary Jane Lindsay
Hilda Owen: Bonnie Cashion
June Safrit: Bonnie Cashion
Carolyn Shaw: John Peeler
Mr. & Mrs. Horace Steadman, Jr.: Mr. & Mrs. William Poe
Bishop & Mrs. Tom Stockton: Bonnie Cashion
Mr. & Mrs. Vann York: Bonnie Cashion, Ned & Katherine Covington
Greg & Caren York: Ned & Katherine Covington

The following November memorials were omitted/incorrectly listed in the last HeartBeat. We apologize for the error.

Robert Grayson Vaughn: Talmadge & Brenda Curry, Alan & Robin Davis, Thomas & Maureen Robinson, Dena Wike, S&D Coffee & Tea
Clarence & Maureen Wagner: Kirk & Sherry Wilson

In Memoriam

Jennie Louise King Lee

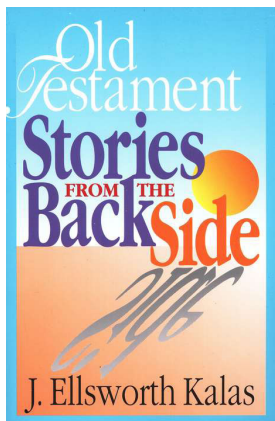
January 3

James K. "Jamie" Stephens, III

January 21

OUR SYMPATHY TO:

Susan Sumpter and family in the death of her father, James Edward McGeogh on January 3.
The family of Jennie Louise King Lee in her death on January 3.
Matt Porter and family in the death of his grandfather, Marion Reed on January 6.
Georgia Orr and family in the death of her sister, Jane Beasley Moore on January 9.
Ashley Culler and **Rose Marie Boone** and their families in the death of their mother, Gloria Ilderton Rochelle on January 16.
Jim & Joyce Stephens and **Joey Stephens** and family in the death of their son and brother, James K. "Jamie" Stephens, III on January 21.



J. Ellsworth Kalas

at Wesley Memorial, February 24

Wesley Memorial is fortunate to host the masterful preacher, Dr. J. Ellsworth Kalas, on Sunday, February 24. Dr. Kalas will teach the combined adult Sunday School classes at 9:45 am in the Chapel. His topic will be "All I Need to Know I Found in Genesis."

Then, at 11:00 am, Dr. Kalas will be preaching in the Sanctuary, where his sermon will be "Kingdom, Come" from Matthew 13:24-33.

Dr. Kalas has pastored congregations in Ohio and Wisconsin, served as President of Asbury Theological Seminary in Wilmore, KY, and is currently Senior Professor of Homiletics at ATS. He has authored 35 books, several of which have been used in many of our adult Sunday School classes.

You will not want to miss this opportunity to hear this noted and influential preacher.

Dr. Kalas' coming to Wesley Memorial has been arranged through Ann and Vann York, who have been friends of Dr. Kalas for many years.

HEARTBEAT
(USPS 327-700)
Published Monthly by Wesley
Memorial United Methodist
Church. Mailing address P.O.
Box 5289, High Point, NC 27262.
Subscription \$1.00 per year pay-
able out of regular contributions
to church budget. Periodical
postage paid at High Point, NC
27260. Send change of address to
The HeartBeat, P.O. Box 5289, High
Point, NC 27262

~ ASH WEDNESDAY ~

**Lent begins on February 13, 2013 with
ASH WEDNESDAY SERVICES.**

The services are ...

- **7:00 am** – Ash Wednesday Service with imposition of ashes in the Chapel and Dr. Al Ward preaching.
- **11:00 am** – Ash Wednesday Service of Holy Communion and imposition of ashes in the Chapel and Rev. Richard Howle preaching.
- **7:00 pm** – Ash Wednesday Service with imposition of ashes in the Sanctuary and Rev. Kathy Barba Pierce preaching.

(No Wednesday Night Dinner on Ash Wednesday)

WESLEY MEMORIAL
A UNITED METHODIST CONGREGATION
1225 Chestnut Drive ~ P. O. Box 5289
High Point, North Carolina 27262